

WORKING WITH BUILDING OFFICIALS

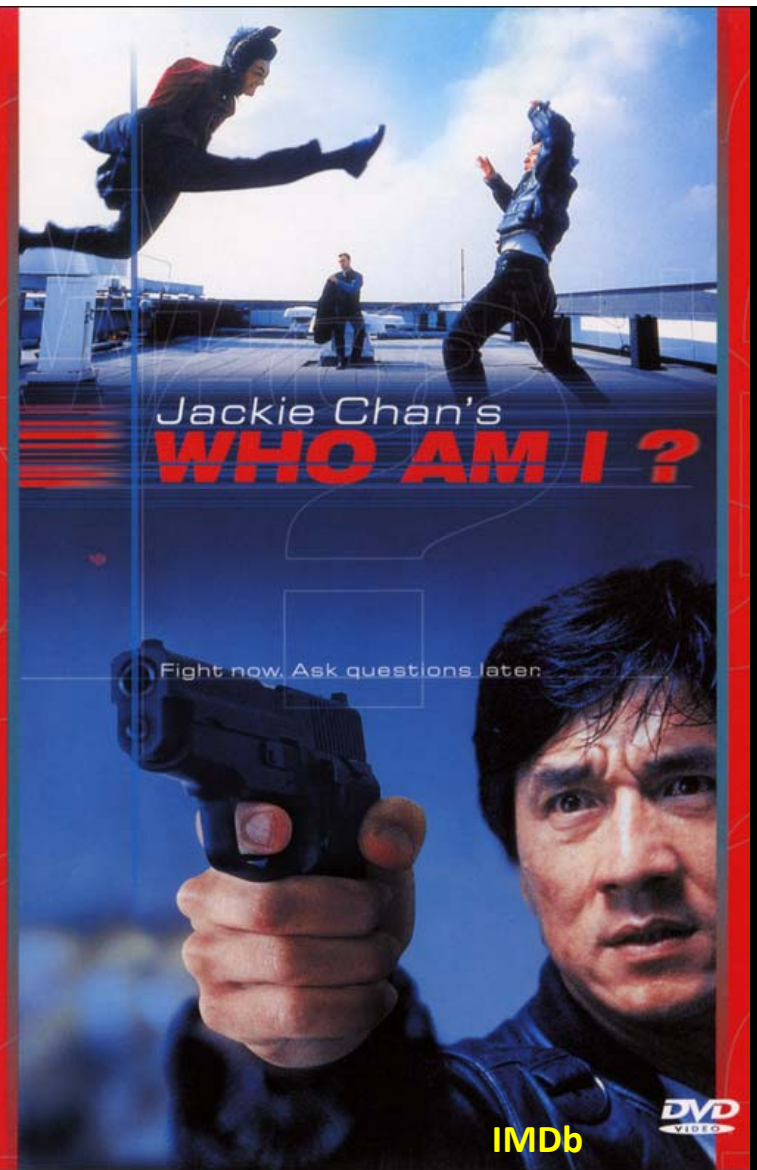
Jim Meyers

**Southwest Energy
Efficiency Project**



BACKGROUND

- Former HERS Rater, QA Designee, Rater Trainer
- Project Manager RESNET accredited software
- Technical director HERS Provider
- Manufacturer Trade Association regional representative



MENTOR

- a wise and trusted counselor or teacher
- someone who teaches or gives help and advice to a less experienced person



WORKING WITH BUILDERS AND TRADES

- Frequency



WORKING WITH BUILDING OFFICIALS

- Plan Review
- Field Inspection

WORKING WITH BUILDING OFFICIALS



Photo Credit

COSTS

- Costs
- Expenses
- Value



WHY

- R102.1
- R102.1.1
- R103.3.1
- R104.1
- R301.1
- R303.1.3
- R303.2
- R402
- R402.4
- R402.4.1.1
- R403.3
- R403.7



NEW CODE RQTS - '09 AND '15 IECC



ICC CHAPTERS

- Joined
- Attended
- Trained



Photo courtesy of Advanced Energy <https://flic.kr/p/9vZ8vZ>

DENVER STORY

An abstract background featuring the text "\$75" repeated multiple times in various colors (red, green, blue, yellow, orange, purple) and sizes, creating a dense, layered effect.

CITY OF PARKER

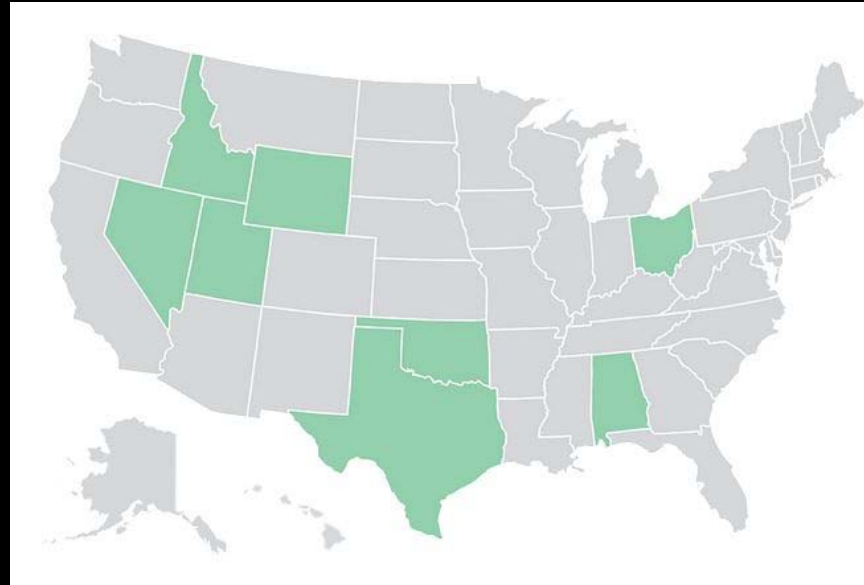
- Trainings
- Mentoring
- Raters
- Trades
- Manufacturers



BUILDING RELATIONSHIPS



BUILDING RELATIONSHIPS



THANKS

- Jim Meyers
- Southwest Energy Efficiency Project (SWEET)
- Email: jmeyers@swenergy.org
- Twitter: [@energymeyers](https://twitter.com/energymeyers)
- www.swenergy.org

